



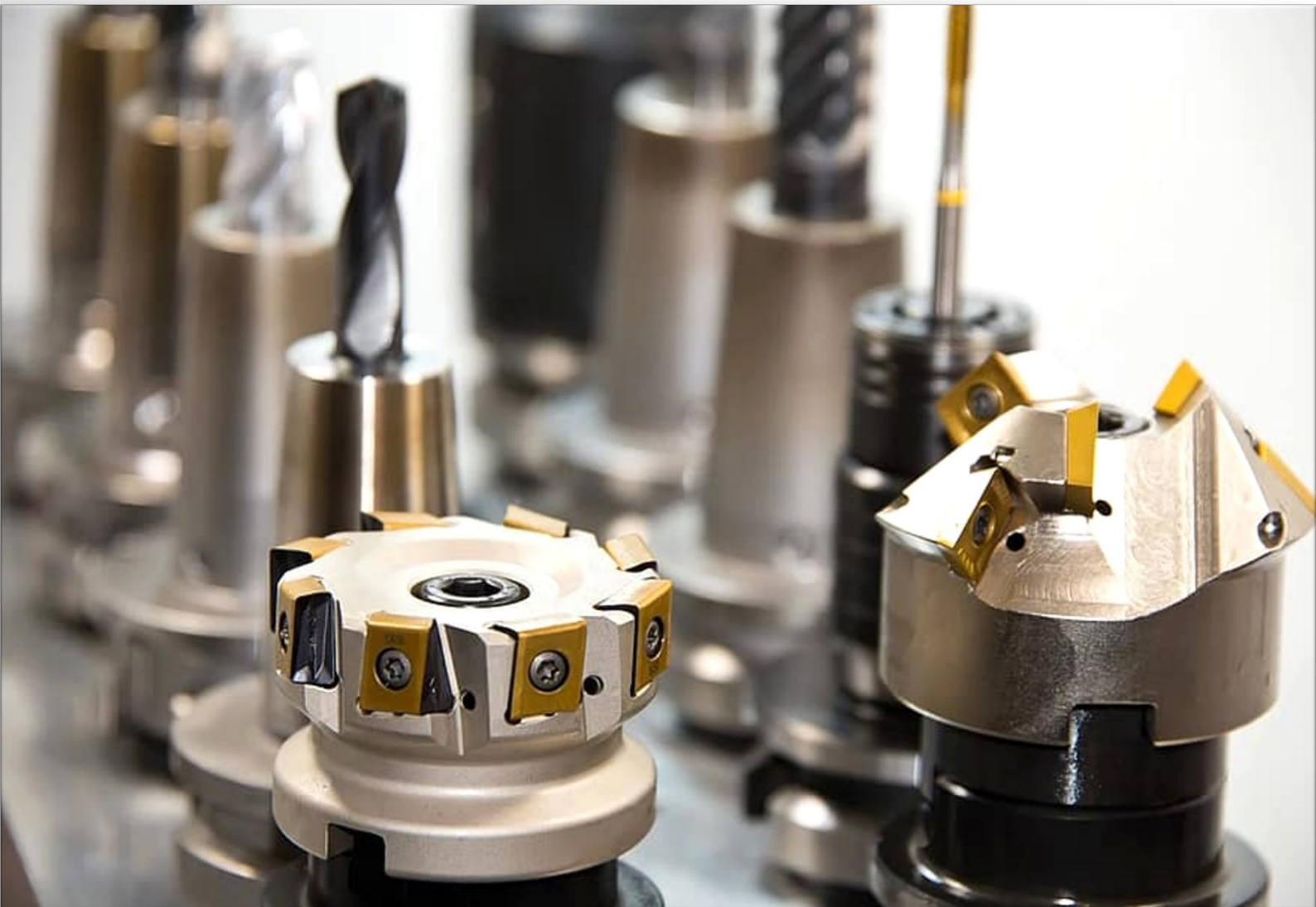
**HAGMANN**

**...where technology is lived**

*filtered*   
*milled*   
*cleaned*   
*packaged*   

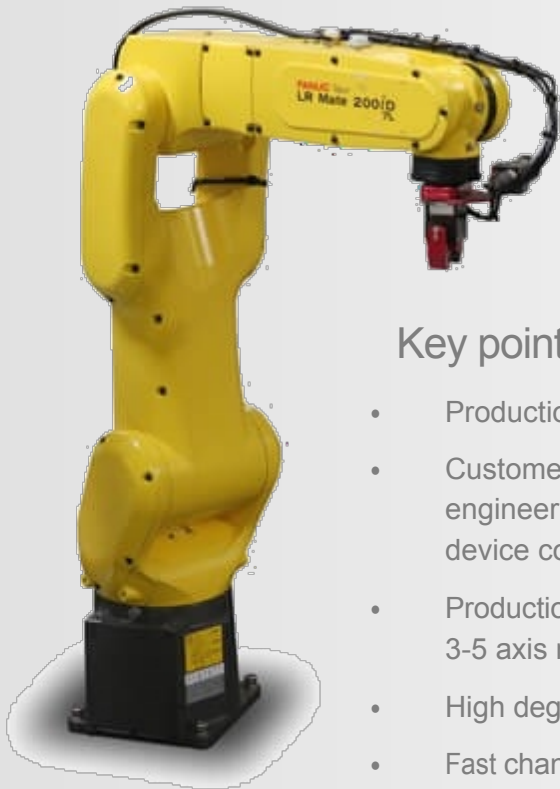
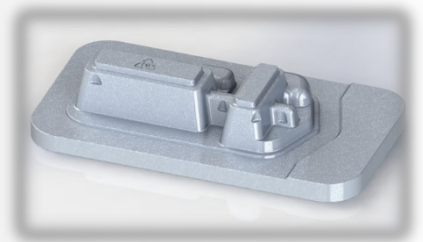
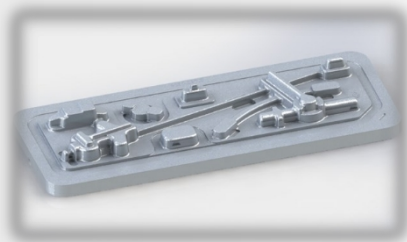
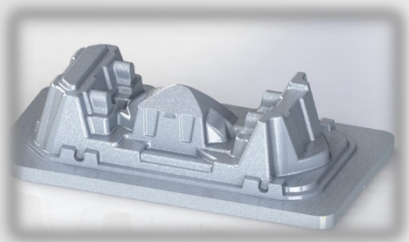

# Hagmann - where technology is milled

*Your system supplier for prototypes, individual and series parts*



## Our offer:

As a supplier of CNC milled parts and assemblies as well as customized machines and systems, Hagmann has more than 30 years of experience. Our lean processes enable us to react quickly to customer requirements and offer high-quality products with short delivery times. Hagmann attaches great importance to high quality and carries out in-process and final inspections to ensure that customers receive the desired quality. Deliveries are made according to the customer's requirements, be it call-off, Kanban or just-in-time. We are experienced in processing framework agreements, call-off orders or individual orders with precise delivery deadlines.



### Key points of our production:

- Production size: From 1 - 5,000 pieces
- Customers: Automation, mechanical engineering and medical technology, device construction
- Production capacity: machine park with 18 3-5 axis milling centers
- High degree of automation
- Fast changeover times
- 3D measuring machine
- Broad portfolio of suppliers for downstream processes such as anodizing and much more.

## Highly qualified specialists process your workpieces

Our highly motivated team, consisting of highly qualified specialists, processes your workpieces using state-of-the-art CNC-controlled machining centers. We use high-performance CAD-CAM systems to ensure maximum precision and efficiency.

We ensure that only the highest quality leaves our company through continuous quality control during processing and the final inspection.

Our state-of-the-art complete machining centers with placement robots enable us to carry out machining and series production on an economical basis.

We are proud to realize your ideas and orders quickly and competently and look forward to putting your project into practice.

## Efficient production thanks to pallet station with processing towers

Our pallet station with processing towers enables efficient production through the implementation of flexible production cells. These manufacturing cells allow us to quickly produce product families with short changeover times, which leads to a high level of agility in our production. In addition, we can produce assemblies in small quantities in a short time by taking advantage of the efficiency of the processing towers. The processing towers offer us the opportunity to combine several machining processes.

## Measuring method

- Careful planning and documentation of measurement tasks
- Regular calibration and maintenance of the measuring devices.
- Use of high-quality measuring devices
- Establishment of standardized procedures for measurement tasks
- Use of statistical process controls to monitor measurement performance.
- Continuous improvement through training, feedback and investment in new technologies.





## Our values:

- **Quality:** We attach great importance to the quality of our products and services and are constantly striving to improve our processes and technologies in order to offer our customers the best possible quality.
- **Experience:** We have many years of experience in the manufacture of milled parts and can look back on a wide range of projects and customers. This puts us in a position to take on complex challenges and offer innovative solutions.
- **Reliability:** We are committed to reliable and timely delivery of our products and services and work closely with our customers to ensure that their requirements and needs are met.
- **Flexibility:** We are able to respond quickly to the changing requirements and needs of our customers and offer flexible solutions to ensure that their needs are met.
- **Price:** We offer our customers competitive prices without compromising on quality and reliability.
- **Environment:** We work with regional suppliers to make the supply chain more sustainable. We invest in our site to reduce electricity consumption and.

